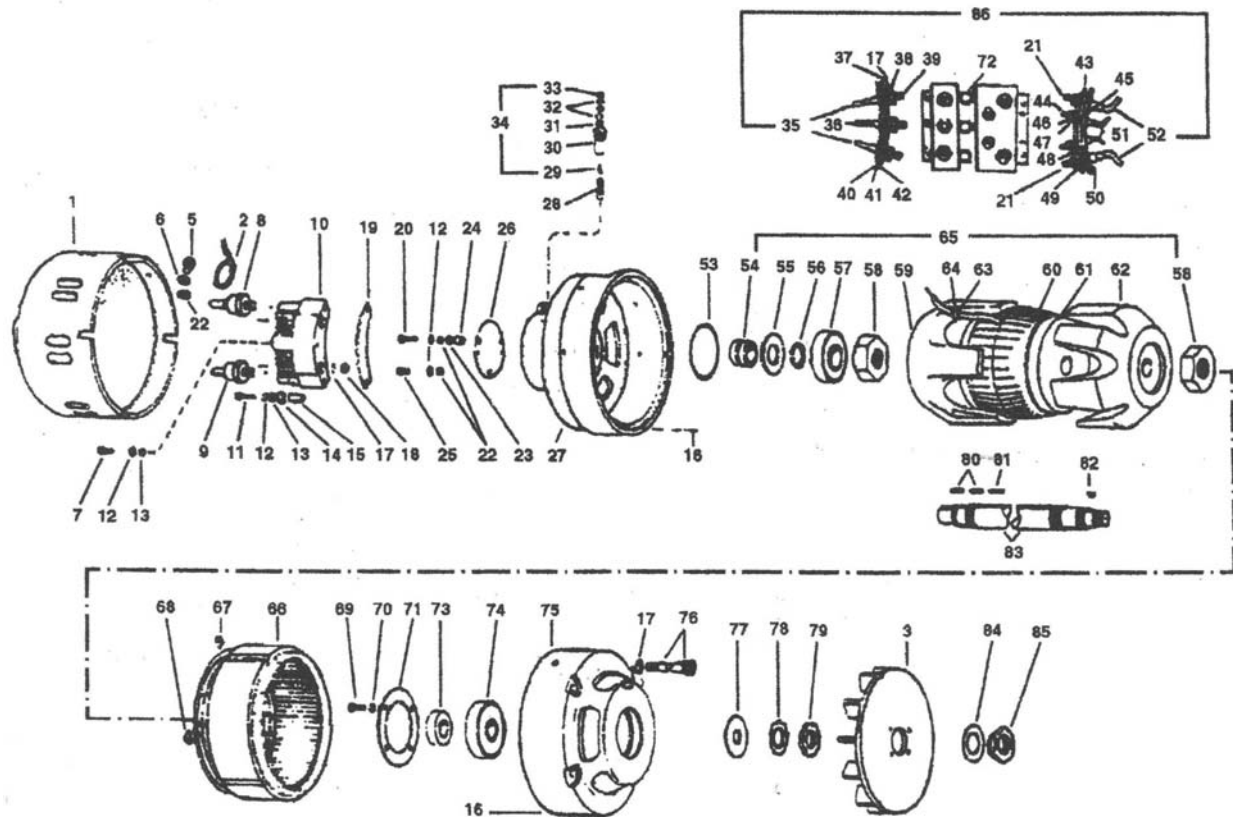


GROUP:	2000 Series
FORM:	2970
FILE:	Alternator Parts List Section
DATE:	July, 1995

PRODUCTS COVERED

MODEL	VOLTS	AMPS
2220AA	14	220
2234AA	14	190
2064AB	14	175
2148AB	28	160
	37.5	150
2258AB	28	220
2258AC	28	220



Parts Not Common

Ref. No.	Qty.	Description	2220AA	2234AA	2064AB	2148AB	2258AB	2258AC
1	1	Cover	75639	45639	58467	75639	99713	99713
60	1	Rotor Coil	100197	75001*	29721*	38389*	99712*	99712
65	1	Rotor Assembly	100222	75648	75478	38388	99711	99711

*Suggested Service Parts

"Common Parts" →

Important: The information contained in this bulletin is intended for use by trained, professional technicians who have the proper tools, equipment, and training to perform the required maintenance described above. This information is NOT intended for 'do-it-yourselfers', and you should not assume that this information applies to your equipment. If you have any questions regarding this information please visit our website at www.prestolite.com, or contact our technical service department at:

Leece-Neville Heavy Duty Systems
7585 Empire Drive
Florence, KY 41042

Phone/Fax: (866) 288-9853
webmail@prestolite.com

Parts - Common

GROUP:	2000 Series
FORM:	2970

Ref. No.	Part No.	Qty.	Description	Ref. No.	Part No.	Qty.	Description
1			See "Parts Not Common"	44	56623	2	Screw, Terminal
2	79940	6	Strap, Plastic Cable	45	31419*	2	Bushing, Insulation
3	96406	1	Fan	46	2771	2	Nut, 1/4-20 Hex.
5	8428	3	Screw, 1/4-20 x 1/2 Hex. Hd.	47	2523	2	Lockwasher, 1/4
6	2523	6	Lockwasher, 1/4	48	2524	2	Washer, Guard
7	4463	3	Screw, 1/4-28 x 5/8 Rd. Hd.	49	31577*	5	Bushing, Insulation
8	96026*	3	Rectifier $\frac{1}{2}$ Pos.	50	58499*	1	Insulator, Inner
9	96025*	3	Rectifier $\frac{1}{2}$ Neg.	51	75019	2	Lead Assy. (F+ & F-)
10	75353*	3	Mount, Rectifier	52	75022	2	Lead Assy. (G+ & G-)
11	13743	6	Screw, 1/4-20 x 1 1/2 Rd. Hd.	53	96112*	1	"O" Ring
12	2523	12	Lockwasher, 1/4	54	32261*	2	Ring Assy.
13	2524	9	Washer, Guard 1/4	55	30257*	1	Washer, Insulation
14	95988	6	Washer, Insulation	56	29658*	1	Ring, Snap
15	96131	6	Sleeving	57	29717	1	Bearing, W206PP
16	16333	2	Pin	58	29875*	2	Nut, 1 3/8-12 Hex
17	2433	15	Lockwasher, 3/8	59		1	Rotor Half (See Note 1)
18	2787	6	Nut, 3/8-24 Hex. St.	60			See "Parts Not Common"
19	58495*	3	Insulator, Mount	61	29716	1	Hub, Rotor
20	22078	2	Screw, 1/4-20 x 1 1/8 Hex. Hd.	62		1	Rotor Half (See Note 1)
21	96854	2	Screw, Terminal	63	30295	1	Clip
22	3226	6	Washer, Guard	64	28334	1	Drive Screw, #8
23	95989	2	Washer, Insulation	65			See "Parts Not Common"
24	101167	2	Bushing, Insulation	66	100018*	1	Stator Assembly
25	21740	1	Screw, 1/4-20 x 3/4 Hex. Hd.	67	75004	2	Lead Assembly
26	74991	1	Insulator, D.C. Terminal	68	75003	1	Lead Assembly
27	75558	1	Housing, S.R. End	69	75348	4	Screw, 10-32 x 1/2 Hex. Hd.
28	96561*	2	Brush	70	2434	4	Lockwasher, #10
29	59357	2	Screw, 8-32 x 3/4 Fill Hd.	71	29663	1	Retainer, Bearing
30	28596	2	Holder, Brush	72	4495	3	Screw, 1/4-20 x 5/8 Hex. Hd.
31	13624	2	Washer, Guard	73	29732*	1	Collar, Thrust
32	2435	4	Lockwasher, #8	74	74091*	1	Bearing, Ball 306
33	2525	4	Nut, 8-32 Hex. Br.	75	75559	1	Housing, D.E.
34	59356*	2	Holder & Stud Assy., Brush	76	58469	4	Screw, 3/8-16 x 5/14 Soc. Hd. Cap.
35	75021	2	Lead Assy., (A.C.)	77	30472	1	Collar, Spacing
36	75020	1	Lead Assy., (A.C.)	78	31097	1	Lockwasher, Shaft
37	3852	5	Washer, Guard	79	18930	1	Nut, Bearing Retainer
38	4661	5	Nut, 3/8 - 16 Hex.	80	11826*	2	Key, 5/32 Sq. x 7/8 Lg.
39	58492	3	Screw, Terminal	81	30470*	1	Wedge, Slot
40	58488*	1	Insulator, Inner	82	3109*	1	Key, #15 Wdrf.
41	58491	1	Plate, Terminal	83	34363	1	Shaft
42	58489*	1	Insulator, Outer	84	1882	1	Washer, Guard
43	58490*	1	Insulator, Outer	85	29769	1	Nut, 3/4-16 Steel Lock
				86	75025	1	Terminal Assembly

***Suggested Service Parts**

NOTE 1: Rotor half replacement is not recommended. Replace with a complete rotor assembly to eliminate the need for critical balancing and machining procedures. Part numbers are available on request from factory.