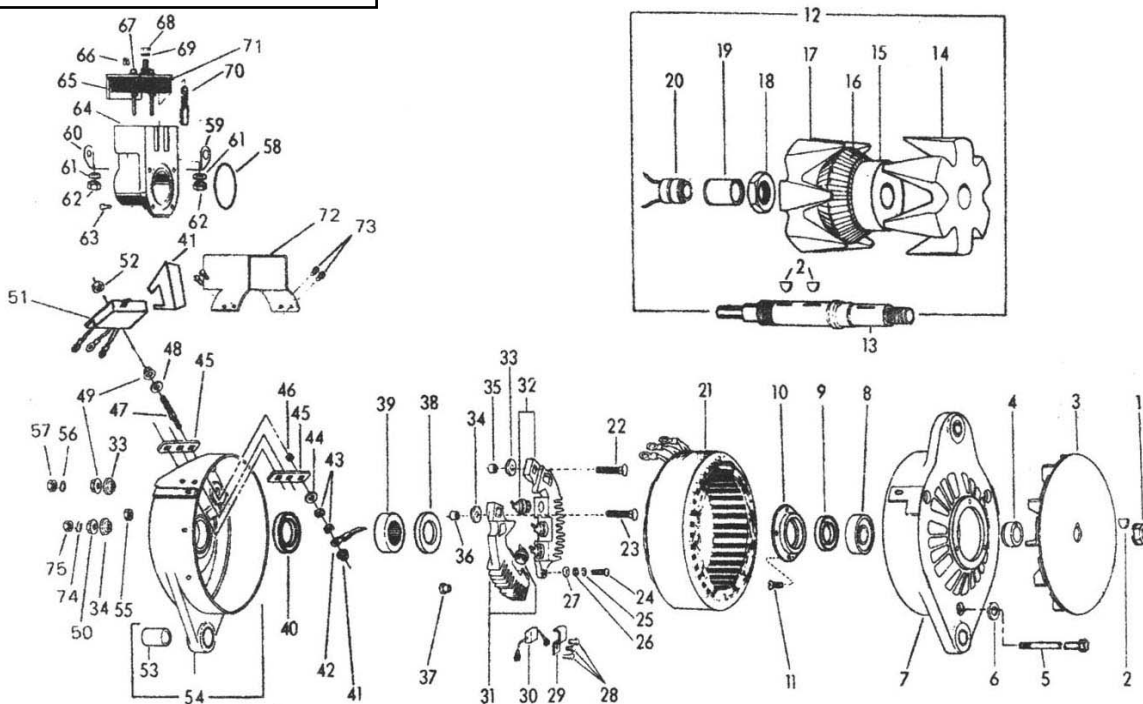


GROUP:	4627-4628JA
FORM:	3979-978 Rev. B 786
FILE:	Alternator Parts List Section
DATE:	July, 1986

PRODUCTS COVERED

MODEL	VOLTS	AMPS
4627JA	28	100
4628JA	28	100

Revision B786: Added Ref. #41 (Vibration Dampner); Changed Ref. #31 to 95010, Ref.#32 to 95011.



Ref. No.	Part No.	Qty.	Description	Ref. No.	Part No.	Qty.	Description
1	76985	1	Nut 5/8-18 Hex. Flange Lock	13	79422	1	Shaft
2	6399	3	Key, No. 8 Woodruff	14*			Rotor Half
3	79835	1	Fan	15	75570	1	Hub
4	59225	1	Spacer, Fan	16	79516	1	Coil Assembly
5	78991	3	Scw., 10-32x5.44 Hex. Hd. St.	17*			Rotor Half
6	75451	3	Washer, Belleville	18	30806	1	Nut, 1" - 14 Hex.
7	99131	1	D.E. Housing	19	79424	1	Race, Inner Bearing
8	78895	1	Bearing 305	20	71193	1	Slip Ring Assembly
9	79405	1	Oil Seal	21	97712	1	Stator
10	79486	1	Retainer Bearing	22	79313	1	Terminal Scw., 1/4" Dia. (-)
11	58754	4	Scw., 10-32x.44 Fl. H. S'tap	23	78997	1	Terminal Scw., 5/16" Dia. (+)
12	79517	1	Rotor Assembly	24	78337	2	Scw., 10-32x.75 Pan. Hd. St.

*Can not be replaced without precision balancing equipment. Order complete rotor (Ref. No. 12)

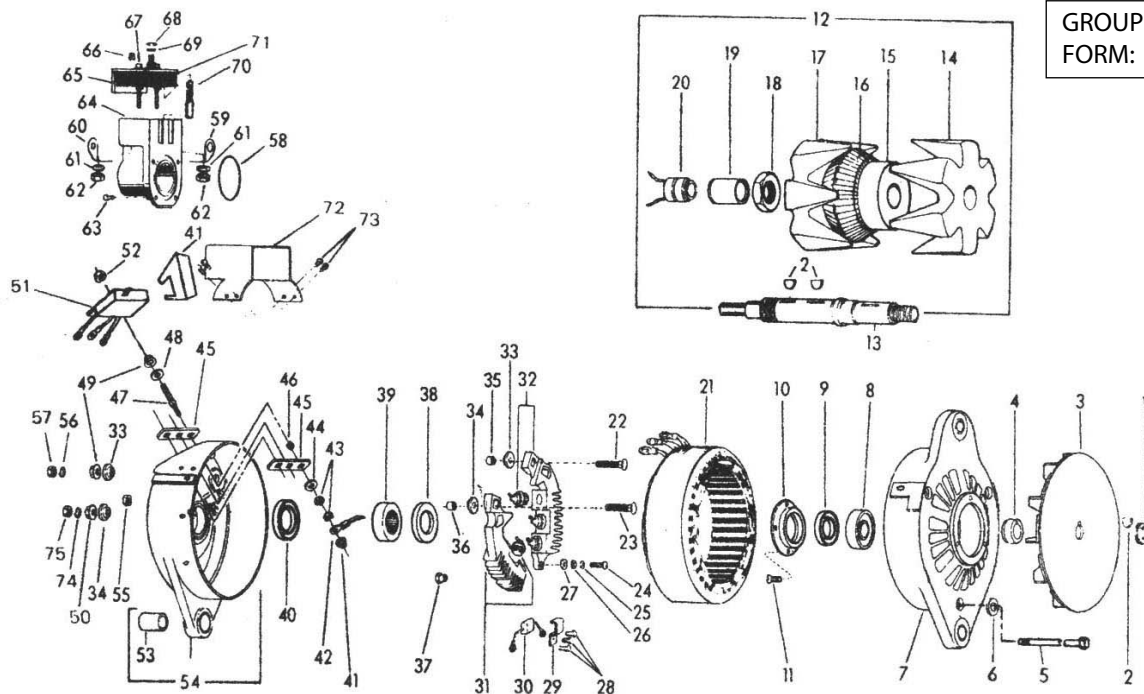
(Continued on next page)

Form 3979-978 Revision B 786

Important: The information contained in this bulletin is intended for use by trained, professional technicians who have the proper tools equipment, and training to perform the required maintenance described above. This information is NOT intended for 'do-it-yourselfers', and you should not assume that this information applies to your equipment. If you have any questions regarding this information please visit our website at www.prestolite.com, or contact our customer service department at:

Leece-Neville Heavy Duty Systems
7585 Empire Drive
Florence, KY 41042

(800) 354-0560
(859) 525-8801
info@prestolite.com



GROUP: 4627-4628JA
FORM: 3979-978 Rev.B 786

Ref. No.	Part No.	Qty.	Description	Ref. No.	Part No.	Qty.	Description
25	2434	2	Lockwasher, No. 10	51	97528	1	Diode Trio
26	2385	2	Guard Washer	52	32172	3	Nut, 1/4-20 Hex. St. Lock
27	52066	2	Washer, Insulation	53	99318	1	Bushing Slideable
28	73543	3	Screw, 6-32 Hex. Hd.	54	71233	1	S.R. Housing Assembly
29	73760	1	Clamp	55	26175	3	Nut, Elastic Stop
30	73541	1	Capacitor Assembly	56	2523	1	Lockwasher, 1/4
31	95010	1	Rectifier Assembly (+)	58	57611	1	Ring, Sealing
32	95011	1	Rectifier Assembly (-)	59	78705	1	Jumper (-)
33	73545	2	Bushing, Insulation	60	78706	1	Jumper (+)
34	73546	2	Bushing, Insulation	61	13676	2	Lockwasher, No. 6 S'proof
35	79431	1	Bushing, Insulation	62	5622	2	Nut, 6-32 Hex. Hd. Br.
36	79432	1	Bushing Insulation	63	13622	4	Scw., 8-32x.62 Rd. Hd. St.
37	73547	2	Bushing Insulation	64	78524	1	Brush Holder
38	79404	1	Oil Seal	65	97525	1	Regulator
39	79406	1	Roller Bearing	66	97287	1	Plastic Screw
40	79403	1	Oil Seal	67	78527	2	Plastic Cap
41	99698	1	Vibration Dampner (4627J Only)	68	4340	1	Nut, 10-24 Hex.
42	73656	3	Lead, Terminal Wire	69	2434	1	Lockwasher No. 10 S'proof
43	2313	6	Nut, 10-32 Hex.	70	77302	2	Brush
44	4492	3	Washer, Guard	71	97679	1	Gasket, Regulator
45	79436	2	Insulator	72	97625	1	Shield Assembly (4627J only)
46	79435	3	Insulation Bushing	73	53789	4	Scw., 8-32x.38 Rd. Hd. St. (4627J only) with Lockwasher
47	79444	3	Stud, Terminal	74	3231	1	Lockwasher, 5/16
48	2073	3	Washer, Guard	75	2364	1	Nut, 5/16-18 Hex. Hd. St.
49	59982	4	Nut, Tenz 1/4-20 Hex.				
50	73009	1	Nut, Tenz 5/16-18				

Important: The information contained in this bulletin is intended for use by trained, professional technicians who have the proper tools equipment, and training to perform the required maintenance described above. This information is NOT intended for 'do-it-yourselfers', and you should not assume that this information applies to your equipment. If you have any questions regarding this information please visit our website at www.prestolite.com, or contact our customer service department at: